

# WINTER

a season of stillness

A Publication of the Ellwood H. May  
Environmental Park Association of Sheboygan County, Inc.

## Maywood: It is a Need that Remains

Change. Change, the inevitable process that leads from one thing to another. The natural world teaches us so elegantly that change is ever with us. The spring ephemeral is just that—here today and gone tomorrow. Succession in plant communities brings new associations of individuals, new trees to dominate the woodland for a time. And then...change.

Maywood has been here for more than 25 years. The land it resides on and the buildings that define it have changed. The city that brought it into being has changed. The economy has changed. The world has changed. And yet, the need to care for our natural world, our home, has not changed.

This is what Maywood teaches us. It remains. The need remains. As we care for Maywood, we care for our environment, for our world. ☺  
by Vicky Menuge

### WINTER PROGRAMS

\* Indicates pre-registration required, call 920-459-3906.

**PreK EdVentures:** Wed. Dec. 2; 10 - 11 am. Does your young explorer wonder about the winter wonderland? Are they fascinated by snow flakes? Have they asked where the animals go in



Maywood Suspension Bridge - Photo by Jon C. Keckonen

## Come, make *your* tracks in our enchanting winter wonderland

winter? Bring them to Maywood where curiosity is encouraged and cabin fever is relieved. Each week a new topic will be explored through stories, crafts, songs & outdoor exploration. Dress appropriately for outdoor exploration time. \$5/child; \$3/Association member child; Free/accompanying adult.\*

**PreK EdVentures:** Thurs. Dec. 3; 10 - 11 am. See Dec. 2. \$5/child; \$3/Association member child; Free/accompanying adult.\*

**PreK EdVentures:** Wed. Dec. 9; 10 - 11 am. See Dec. 2. \$5/child; \$3/Association member child; Free/accompanying adult.\*

**PreK EdVentures:** Thurs. Dec. 10. 10 - 11 am. See Dec. 2. \$5/child; \$3/Association member child; Free/accompanying adult.\*

**Audubon Luncheon:** Sat. Dec. 12. Noon. Join Sheboygan County Audubon at Nino's on Kohler Memorial drive for a luncheon and presentation by

Ron Klunk. For more information call June Platz at 920-565-2577.\*

**PreK EdVentures:** Wed. Dec. 16. 10 - 11 am. See Dec. 2. \$5/child; \$3/Association member child; Free/accompanying adult.\*

**PreK EdVentures:** Thurs. Dec. 17; 10 - 11 am. See Dec. 2. \$5/child; \$3/Association member child; Free/accompanying adult.\*

**Programs** continued on page 2

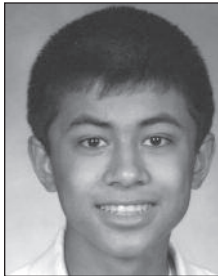
## VOLUNTEERS FOR ALL SEASONS

Organizations like Maywood that rely so heavily on volunteers are always pleased to welcome new enthusiasts to their ranks. Happily, Maywood has attracted many excellent younger volunteers. Three fine examples are Josh Feng (no photo available), Jasmine Erbs and Spenser Ten Haken.

Josh, a busy 9th grader at North High School, often participated in school programs and biked at Maywood. In an effort to give something back, Josh has worked removing grapevines and as an Earth Ride volunteer.

Jasmine, a junior at North, became involved through Key Club. She has pitched-in serving food on Flapjack Day, as well as on Earth Ride, Christmas Crafts, and pre-K programs.

Spenser is a sophomore at Sheboygan Christian High School. His parents took him to Maywood programs when he was younger, and that sparked a continuing interest. When he is not busy with school, soccer or golf, Spenser has helped cut down unwanted grapevines and helped with various cleaning projects at Maywood.



**Josh  
Feng**



**Jasmine  
Erbs**



**Spenser Ten  
Haken**

The volunteer efforts of these three teenagers perfectly illustrate the multiplier effect that the residents of Sheboygan enjoy. Yes, a small amount of tax money goes to support Maywood, but it is multiplied by the contributions of literally hundreds of volunteers.

With the help of people like these high school students, Maywood's future looks bright indeed. Thanks, Josh, Jasmine and Spenser! ☺

by Rob Garton

**Programs** continued from page 1

**Christmas Bird Count:** Sat. Dec. 26; All day. Join Sheboygan County Audubon for their annual Christmas count. Locations of count are throughout Sheboygan County. Potluck and tally will follow at Tom and Mary Ann Neuses' home. Alternate date is December 27. For more information or to register, please contact June Platz at 920-565-2577.

**PreK EdVentures:** Wed. Jan. 6; 10 - 11 am. See Dec. 2. \$5/child; \$3/Association member child; Free/accompanying adult.\*

**PreK EdVentures:** Thurs. Jan. 7; 10 - 11 am. See Dec. 2. \$5/child; \$3/Association member child; Free/accompanying adult.\*

**PreK EdVentures:** Wed. Jan. 13; 10 - 11 am. See Dec. 2. \$5/child; \$3/Association member child; Free/accompanying adult.\*

**PreK EdVentures:** Thurs. Jan. 14; 10 - 11 am. See Dec. 2. \$5/child; \$3/Association member child; Free/accompanying adult.\*

**Sheboygan County Audubon Society Brunch:** Thurs. Jan. 14; 10 am. Join Sheboygan County Audubon for their annual brunch. Dave Kuckuk will present a report on the results of the Bluebird Trail project held in 2009. Free.\*

**PreK EdVentures:** Wed. Jan. 20; 10 - 11 am. See Dec. 2. \$5/child; \$3/Association member child; Free/accompanying adult.\*

**PreK EdVentures:** Thurs. Jan. 21; 10 - 11 am. See Dec. 2. \$5/child; \$3/Association member child; Free/accompanying adult.\*

**PreK EdVentures:** Wed. Jan. 27; 10 - 11 am. See Dec. 2. \$5/child; \$3/Association member child; Free/accompanying adult.\*

**PreK EdVentures:** Thurs. Jan. 28. 10 - 11 am. See Dec. 2. \$5/child; \$3/Association member child; Free/accompanying adult.\*

**Beginning Birding Class:** Sat. Jan. 30; 1:30 pm. Interested in birding, but not sure how to begin? Members of Sheboygan County Audubon will show basic techniques for birding, provide information about equipment, and share helpful hints. Free.\*

**Annual Members Appreciation Afternoon:** Sun. Jan. 31. Association members are invited to join us. The day's events feature a family activity from 12:30-1:30 pm, refreshments from 1:30-2pm and guest speaker (to be announced) beginning at 2pm. Come for all or part of the activities. Membership renewals available and new members are welcome. Please RSVP by January 27 by calling 920-459-3906.\*

**PreK EdVentures:** Wed. Feb. 3; 10 - 11 am. See Dec. 2. \$5/child; \$3/Association member child; Free/accompanying adult.\*

**PreK EdVentures:** Thurs. Feb. 4; 10 - 11 am. See Dec. 2. \$5/child; \$3/Association member child; Free/accompanying adult.\*

**PreK EdVentures:** Wed. Feb. 10; 10 - 11 am. See Dec. 2. \$5/child; \$3/Association member child; Free/accompanying adult.\*

**PreK EdVentures:** Thurs. Feb. 11; 10 - 11 am. See Dec. 2. \$5/child; \$3/Association member child; Free/accompanying adult.\*

**Programs** continued on page 3

Programs continued from page 2

**Audubon Program:** Thurs. Feb. 11; 7 pm. Jim Buchholz will discuss his trip to the Island Nation of Vanuatu in the South Pacific. His daughter Kristine and her husband Javi Alaniz spent 2 1/2 months working there for the Peace Corps helping with various projects including health/medical improvements and training and assisting remote villages obtain fresh drinking water. Jim will share pictures of the ecology of the island which was affected by the recent earthquake. Sponsored by Sheboygan Cty Audubon Society. Free.

**PreK EdVentures:** Wed. Feb. 17; 10 - 11 am. See Dec. 2. \$5/child; \$3/Association member child; Free/accompanying adult.\*

**PreK EdVentures:** Thurs. Feb. 18; 10 - 11 am. See Dec. 2. \$5/child; \$3/Association member child; Free/accompanying adult.\*

**Local Food for Global Thought – 3rd Annual Local Food Fair:** Sat. Feb. 20; 10 am-3 pm. Join us for our third year of celebrating Sheboygan area local food resources. Browse displays and booths from over 25 vendors and local CSA (Community Supported Agriculture) farms. Locally produced food will be available from many vendors. Guest speakers and cooking demonstrations will be on-going throughout the day. Watch for specific information on our website, [www.GoMaywood.org](http://www.GoMaywood.org). Admission: Free-will donation.

**Maple Sugar VTN Training:** Tues. Feb. 23, 1 - 3 pm & Thurs. Feb. 25, 10 am - Noon. Each year, Maywood Volunteer Teacher Naturalists (VTNs) teach the process and history of Wisconsin maple sugaring to hundreds of local 4th graders. If you are interested in leading school tours, this training reviews the tour stations, teaching techniques, maple sugar processing, and history. If you cannot make the trainings, but still want to volunteer, contact Environmental Park Naturalist Rebecca Clarke. New and experienced VTNs are welcome! Maple Sugar tour guides must be available weekdays in March from 9:30 - 11:30 or 12:15 - 2:15. Those wanting to assist sap collection, sap boiling, and tree tapping, please contact Environmental Park Director David Kuckuk during the third week of February. Pre Registration required. Free.

**PreK EdVentures:** Wed. Feb. 24; 10 - 11 am. See Dec. 2. \$5/child; \$3/Association member child; Free/accompanying adult.\*

**PreK EdVentures:** Thurs. Feb. 25; 10 - 11 am. See Dec. 2. \$5/child; \$3/Association member child; Free/accompanying adult.\*

**Beginning Birding Class:** Sat. Feb. 27; 1:30 pm. Interested in birding, but not sure how to begin? Members of Sheboygan County Audubon will show you the basic techniques for birding, provide information about equipment, and share helpful hints. Free. ☺

## DIRECTOR'S NOTES

by David R. Kuckuk  
Environmental Park Director

Winter is often thought of as a period of dormancy, at least in the natural world, as the quantity of programs in this issue suggests. But change is happening at an overwhelming rate and the Maywood staff will be in a planning, rather than programming mode, for 2010 and beyond this winter.

Our first planning session begins on December 1 to look carefully at programs, projects, personnel, Advisory Board committee structure, and the increasing number of responsibilities now assigned by the Department of Public Works (DPW).

Budget cuts in 2009 and 2010 will continue to have numerous effects on our operation. Wearing multiple hats, and continuing to do more with less are mantras that will be with us for some time to come. Numbers of programs will undoubtedly be reduced to cover our priorities of visitor safety and fiscal responsibility above all.

To that end, you may already notice the absence of our winter seasonal event, "Wishing for Winter." Its seven-year tenure came to an abrupt end when the impact of City cuts became evident. The event's time will be invested in retooling to achieve our mission.

One temporary complication is the slated 2010 reconstruction of Mueller Road. Although providing challenges for numerous programs, the Maywood Earth Ride will likely be the biggest hurdle. We will be searching for windows of opportunity to offset this temporary route closure. However, when complete, the new Mueller Road will provide a safe route for pedestrians and bicyclists and greatly enhance the Maywood Earth Ride.

I look forward this winter to creatively looking at prioritizing efforts to best meet our challenges. Enjoy our winter wonderland at Maywood, note the return of the Juncos once again here for winter, an abundance of animal tracks, snow for skiing, and rare wildlife sightings.

Keep your eyes on the horizon as our challenges present new possibilities for Maywood in this time of change. ☺



EcoImages

Serving food treats at the 2008 Maywood Food Fair



## THE LEADING EDGE

News from the Association, Advisory Board, & Trust.

EcoEdges has done a wonderful job informing members and friends of the events and programs at Maywood as well as recognizing individuals who have played a key role here over the years. We are grateful to Nancy Eckardt for her leadership and guidance in publishing the newsletter four times each year for nearly 20 years. Along with key committee members, Nancy Schreiber and Paula Kletzein, she has seen to it that the content has been consistent with the Association, Trust, and Park objectives has guided the focus of each issue, and has been persistent in “encouraging” contributors of articles to meet the deadlines for publication. Your president can attest to her persistence for which I thank you, Nancy.

The Spring 2010 issue of Eco Edges will have an entirely new look. James Reitter and Paula Kletzien have been working diligently on the new format along with graphic design assistance from Ann Gaygan. The new format will be six pages instead of the current eight and will include color photos and graphics.

By the time you receive this issue of Eco Edges the new stained glass windows above the north and south entrances to the Ecology Center should be in place. The windows, designed by Laura Casper, were gifts from the Friends of the Parks organization which recently disbanded. The windows depict the natural habitat which is Maywood.

Joe Majerus of Landmark Landscape is currently working on prices for the next phases of our landscaping plan. Contributed funds allocated for the project will be used to pay for the plantings which will be done next spring.

The Strategic Planning Committee recommended standing committee restructuring which will result in better administration and communications. The following committees, each overseen by a member of the Executive Committee, will coordinate activities striving to increase the effectiveness of all aspects of operations.

- Board Development and Executive Committee
- Program Growth, Promotion, and Staffing Structures
- Fund Development, Finance, Endowment and Membership
- Property Stewardship. ☺

## ENVIRONMENTAL BRIEFS

Maywood habitat and inhabitants from the Arboretum to Zoology.

### The Arboretum at Maywood Shagbark Hickory (*Carya ovata*)

Truly a tree for all Seasons, the distinctive feature of the Shagbark Hickory is its shaggy bark, which adds to its Winter interest and attractiveness. In Spring, its flowers, developing at the same time as the leaves, appear large, brownish and magnolia-like. The Summer foliage is yellowish-green, with each leaf having five leaflets; in Fall the leaves turn bright yellow and brownish-golden. The fruits (seeds), ripening in October, are edible. Unlike other Hickories which produce bitter tasting nuts, the Shagbark Hickory nuts are delicious and are used to enhance the taste of many foods. To view this Wisconsin native, visit The Arboretum at Maywood. (See Nuggets on calendar page.)

### Winter Sights - Snowshoes

Park hours 6 am - 10 pm

Snowshoes likely developed in central Asia 6,000 years ago. Ancestors of Alaskan Inuits and Native Americans migrated from Asia to North America, bringing their snowshoes.

The first snowshoes were bent ash, birch, willow, or spruce twigs with rawhide lacing. North American tribes are attributed with adapting four snowshoe types: Alaskan, Ojibwa, Michigan and Bear Paw.

The long, narrow, and upturned toe of the Alaskan shoe makes for swift travel in deep snow while breaking trail. The canoe-like double-pointed Ojibwa shoe allows travel over a variety of terrain with speed and ease. Walking backwards is even possible!

The long-tailed Michigan snowshoe resembles a tennis racquet. The long tail makes turning difficult, gets caught on hidden undergrowth, but carries heavy loads.

The oval Bear Paw design, used in today's modern shoes, is for forested conditions where maneuverability is most important.

Native people learned survival from the animals around them. Hunters observed animals' feet, which like snowshoe hares and lynx, traveled easily in the deep snow.

Snowshoeing at Maywood is a great way to enjoy these lessons from nature. Please avoid walking over ski tracks. Have fun! ☺

by Rebecca Clarke, Park Naturalist



## The Trust of Maywood

Dear Association members and friends of Maywood,

In mid-October, Ann and I drove up to our family cottage north of Antigo with friends thinking that we would see the last of the fall colors and perhaps do some raking. We were greeted by more than three inches of snow! It was quite an experience seeing the white flakes clinging to the colorful leaves. I did manage to carry my kayak down to the lake for its final voyage of the season. When our daughter saw a photo of me with snow on the kayak, she was convinced that I was a bit “daffy!” It was a very unusual fall season!

Some things didn’t change. We experienced once more a very successful Earth Ride in September. Over 200 volunteers assisted with the event which saw more than 750 riders enjoying a very beautiful day of cycling. This year we raised a little over \$26,000 to help support the operations and programming at Maywood. Kudos to Angie Fischer, Trust Administrative Assistant, who coordinated the signature event.

The fall saw numerous yellow school buses transporting local area school children to Maywood for environmental education programs. These programs headed by our Naturalist, Rebecca Clarke, and staffed by our Trust Educational Specialists, Beth Carreno and Jess Johnsrud along with a number of Volunteer Teacher Naturalists, provide students with hands-on experiences while surrounded by nature.

As we look ahead to the winter season and beyond, it is likely you will be seeing some changes at Maywood, some resulting from the strategic planning that has been going on over the last several months. Participants in the planning process all agreed that Maywood is a “hidden treasure” of Sheboygan County. Many local residents are not aware of the programs and facilities available to them at Maywood and, therefore, have not experienced the trails, the Arboretum, the Ecology Center or the numerous offerings available throughout the year. The planning committee felt that a more efficient committee structure could better address the challenge of supporting the Environmental Park purpose and functions and encouraging more people to make use of our facilities and programs. We hope to have the new committee structure in place early in 2010.

The planning committee also felt it was important to make our 135+ acres more “user friendly” with improved signage – both directional and interpretive. Committee members were assigned the job of visiting other parks in Wisconsin and reporting on different types of signage used. In the process we learned more about such parks as Heckrodt Wetland Reserve in Menasha, Gordon Bubolz Nature Preserve in Appleton, and Mosquito Hill Nature Center near New London. The Committee is investigating different types of signage along with their respective costs and will be developing a timetable for the introduction of new signage at Maywood.

The subject of the cost of new signage is a good segue to the topic of financial support needed for Maywood! Each year at this time we remind members and friends that The Environmental Park Trust of Sheboygan County is our non-profit 501(c)(3) organization which receives monetary gifts for Maywood. We depend heavily on the generosity of individuals, foundations, and corporations in order for us to continue to provide educational opportunities, outdoor recreation, and hands-on environmental experiences for our community. Thanks for your support and best wishes for a wonderful Holiday Season.

Jon C. Keckonen, President

**The Environmental Park Trust of Sheboygan County**  
**3615 Mueller Road**  
**Sheboygan, WI 53083-2610**

## Program Nuggets

### The Christmas Bird Count:

Saturday, December 26. An all-day event that incorporates Maywood, the Lake Michigan waterfront in Sheboygan, and areas from Cedar Grove to Howards Grove and Waldo on the west, ending with a pot luck tally in Kohler. Call June Platz, 565-2577, for more information.

### Reminder - Annual Members

**Appreciation Afternoon:** Sunday, January 31, 12:30 pm. Renew your Association membership or join at the door. Please RSVP by January 27 by calling 920-459-3906.

### Extra from the Arboretum Story:

Shagbark Hickory Trees are easily propagated. Soak the nuts in room temperature water for two to four days, changing the water each day. Then place the nuts in moist sand in a covered jar and refrigerate for 30 to 150 days. Then put them in pots with good drainage in any growing medium; keep moist until able to plant outside.

### CURRICULUM-BASED SCHOOL PROGRAMS

Plant Development - Grade 3  
EcoAdventure Course - Grades 5-9  
Group Initiatives Program - Grades 4-8  
Land and Water - Grades 4-6  
River Investigations - Grades 8-12  
Wilderness Skills - Grades 5-8  
Wild About Weather - Grade 1  
Wisconsin Maple Sugaring - Grade 4  
Winter Adaptations - Grades K-10  
Habitat Hikes - Grades preK-5  
Butterfly hike - Grade 3  
How Birds Make a Living - Grades 2-5  
Aquatic Ecology - Grades 4-8  
Soils - Grades 2-6  
Pigeon River Investigations - Grade 5



Schedule classroom visits with  
Rebecca Clarke, Naturalist  
e-mail: rclarke@ci.sheboygan.wi.us  
or call 920-459-3906.

# Maywood Winter Calendar

## December 2009

- W 2, Th 3, W 9, Th 10, PreK Edventures** 10 - 11 am \$5/child; \$3/Association member child; free/accompanying adults.\*
- Sa 12 Audubon Luncheon** 12 noon At Nino's. Call June Platz, 920-565-2577.\*
- W 16, Th 17, PreK Edventures** 10 - 11 am \$5/child; \$3/Association member child; free/accompanying adults.\*
- Sa 26 Sheboygan County Audubon Society Christmas Bird Count** Free.\*  
Call June Platz, 920-565-2577. See Nuggets.

## January 2010

- W 6, Th 7, W 13, Th 14, PreK Edventures** 10 - 11 am \$5/child; \$3/Association member child; free/accompanying adults.\*
- Th 14 Sheboygan County Audubon Society Brunch** 10 am. Free.
- W 20, Th 21, W 27, PreK Edventures** 10 - 11 am \$5/child; \$3/Association member child; free/accompanying adults.\*
- W 27 Advisory Board Meeting** 7 pm.\*
- Th 28 PreK Edventures** 10 - 11 am \$5/child; \$3/Association member child; free/accompanying adults.\*
- Sa 30 Beginning Birding Class** 1:30 pm Sheb. Cty Audubon Society. Free.\*
- Su 31 Annual Members Appreciation** 12:30 pm RSVP by Jan 27. 920-459-3906.\*

## February 2010

- W 3, Th 4, W 10, Th 11, PreK Edventures** 10 - 11 am \$5/child; \$3/Association member child; free/accompanying adults.\*
- Th 11 Sheboygan County Audubon Society Program** 7 pm Free.
- W 17, Th 18, PreK Edventures** 10 - 11 am \$5/child; \$3/Association member child; free/accompanying adults.\*
- Sa 20 Local Food for Global Thought-2nd Annual Local Food Fair** 10 am - 3 pm See [www.GoMaywood.org](http://www.GoMaywood.org). Donations accepted.
- Tu 23 Maple Sugar VTN Training** 10 am-noon. Pre-registration required. Free.\*
- W 24, Th 25, PreK Edventures** 10 - 11 am \$5/child; \$3/Association member child; free/accompanying adults.\*
- Th 25 Maple Sugar VTN Training** 10 am-noon. Pre-registration required. Free.\*
- Sa 27 Beginning Birding Class** 1:30 pm Sheb. County Audubon Society. Free.\*

\*Pre-registration required, please call 920-459-3906

Ellwood H. May Environmental Park  
3615 Mueller Road, Sheboygan, WI 53083-2610  
[www.gomaywood.org](http://www.gomaywood.org)



# Maywood Speaks

Programs for business, church, conservation, and service organizations.

Maywood speakers are available during the day or evening to present a variety of environmental/nature slide or video presentations to area service club meetings, church groups, or special events.

Presentations range from 20 minutes to one hour, depending upon your organization's needs.

A donation/honorarium is requested for any presentation, dependent upon the speaker, length of time, and location. For additional information and current topics available, please call Joyce Hewitt at 920-452-1131. ☺

## Wish List

- Supplies for school groups:

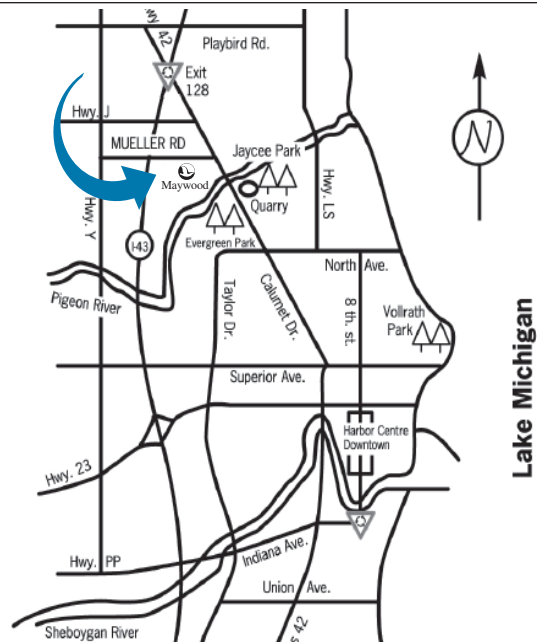
Pencils

Clipboards

Various colors of waterbased and permanent markers

- Wild Bird Feed

- Business calculator



### Directions to Ellwood H. May Environmental Park:

From I-43, exit Sheboygan #128. Go south on Hwy 42-1.1 miles. Turn right on Mueller Road. Park entrance is .2 mile on the left.

### Directory

#### Association/Trust

**President**  
Jon C. Keckonen

**Trust Administrative Assistant**  
Angela Fischer

**Trust Environmental Education Specialists**  
Beth Carreno and Jess Johnsrud

**Trust Volunteer Coordinator**  
Carol Schwoerer

**EcoEdges Editorial Committee**  
Nancy B. Eckardt/James Reitter  
Co-Chairs

#### Staff

**Environmental Park Director**  
David R. Kuckuk

**Environmental Park Naturalist**  
Rebecca Clarke

# Membership

## Ellwood H. May Environmental Park Association of Sheboygan County, Inc.

Membership year - 02/01/10 to 01/31/11. New memberships *now* extend to 01/31/11

New \_\_\_ Renewal \_\_\_ Gift \_\_\_

Name \_\_\_\_\_

If membership is an organization or business, list contact person below

Street Address \_\_\_\_\_ City \_\_\_\_\_ Zip \_\_\_\_\_

Res. tel. \_\_\_\_\_ Bus. tel. \_\_\_\_\_

e-mail address \_\_\_\_\_

Mail to: **Membership Desk**  
3615 Mueller Road  
Sheboygan, WI 53083-2610

\*Contributions above \$20 membership are tax-deductible under section 501(c)(3) of the Internal Revenue Code.

### Basic Membership Donations

**\$20.00**

- \* Annual Operations Fund \$ \_\_\_\_\_
- \* Endowment Fund \$ \_\_\_\_\_
- \* Special Projects Fund \$ \_\_\_\_\_
- The Arboretum at Maywood \$ \_\_\_\_\_
- Ecology Center Landscaping \$ \_\_\_\_\_
- Signage \$ \_\_\_\_\_

### Total Enclosed

\$ \_\_\_\_\_

### Welcome New Association Members

Peter and Sara Bergman, Gary and Suzanne Garski, Greg and Jennifer Grose,  
Tom and Eileen Hilke, Ed and Lisa Janairo,  
Steven Olig, Tom and Anneke Teaters, Fred and Gail Tyszka.

I am interested in volunteering at Maywood \_\_\_\_\_

Ellwood H. May Environmental Park Association  
of Sheboygan County, Inc.  
3615 Mueller Road Sheboygan, WI 53083-2610

Ecology Center Hours: Mon.-Fri. 9 am-4 pm; Sat.-Sun. 1-4 pm

telephone: 920-459-3906 fax: 920-459-4089  
e-mail address: [maywood@ci.sheboygan.wi.us](mailto:maywood@ci.sheboygan.wi.us)  
web site: [www.GoMaywood.org](http://www.GoMaywood.org)  
city web site: [www.sheboygan.ci.us](http://www.sheboygan.ci.us)

Nonprofit  
Organization  
U.S. Postage  
PAID  
Sheboygan, WI  
Permit No. 48

**Note: Your address now includes “or current resident”  
to avoid charges on returned or undeliverable mail. Please  
advise Maywood prior to your address change.**



## The Ecology Store at Maywood ... where there is something for everyone

*An Association fund-raising project of Ellwood H. May Environmental Park Association of Sheboygan County, Inc.*



Keep the Ecology Store in mind for your  
Christmas and Holiday shopping.  
Great gifts to fill those “stockings”  
hung-with-care” and to fit into boxes  
with bows beneath the tree.  
Come see the outstanding T-shirts, sweatshirts,  
ornaments, books, games, toys, puzzles, etc.  
There is a wonderful selection of gifts for all ages.  
And, take advantage of the holiday sale in progress.

*This holiday season remember your family and friends with a gift from Maywood.  
Your purchases benefit Maywood, as **all** proceeds help provide for  
its programs, promotion, and development. ☺*